

Asian Breeze (20)

(亜細亜の風)

Happy New Year to you all

23 February, 2012

A Happy New Year may sound little too late, but the "Spring Festival," the literal translation of the Chinese name of (春節), was 23 January 2012. Each year is symbolized with animals in Chinese calendar. This year is the Dragon which is the fifth animal in the 12-year cycle of the Chinese zodiac. The Year of the Dragon is associated with the earthly branch symbol (辰) and is considered the luckiest year in the Chinese Zodiac.



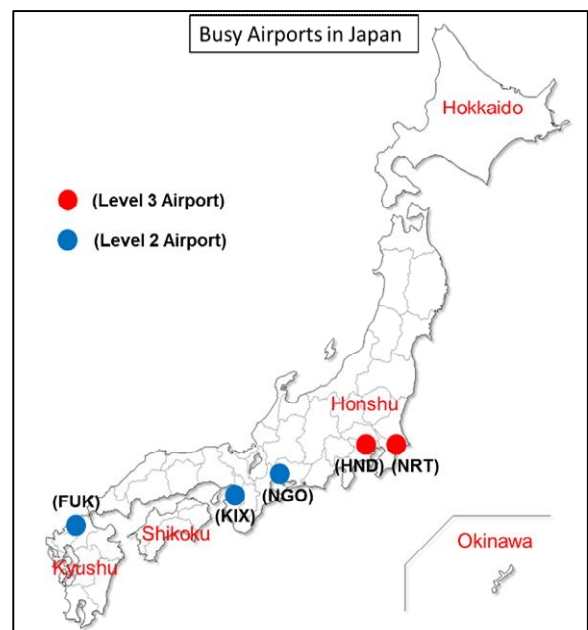
It is believed that people born under the Dragon zodiac (in 2000, 1988, 1976, 1964, 1952, and 1940) share certain characteristics: Innovative, enterprising, self-assured, brave, passionate, conceited, and quick-tempered. The Dragons are the free spirits of the Chinese Zodiac. Restrictions blow out their creative spark that is ready to flame into life. So, they must be free and uninhibited. The Dragon is a beautiful creature, colorful and flamboyant. An extroverted bundle of energy, gifted and irrepressible, everything Dragons do is on a grand scale - big ideas and extreme ambitions. However, this behavior is natural and isn't meant for show. Because they are confident, fearless in the face of challenge, they are almost inevitably successful.

To tell the truth, I was born under the Dragon and will become 36 (???) this year. All the characteristics mentioned above perfectly matches mine. (Laugh...) For those who were born under the Dragon, is your character correctly expressed by the above statement? In this issue, Fukuoka International Airport was featured based upon the interview of JCAB Airport Office. I hope you will enjoy reading it.

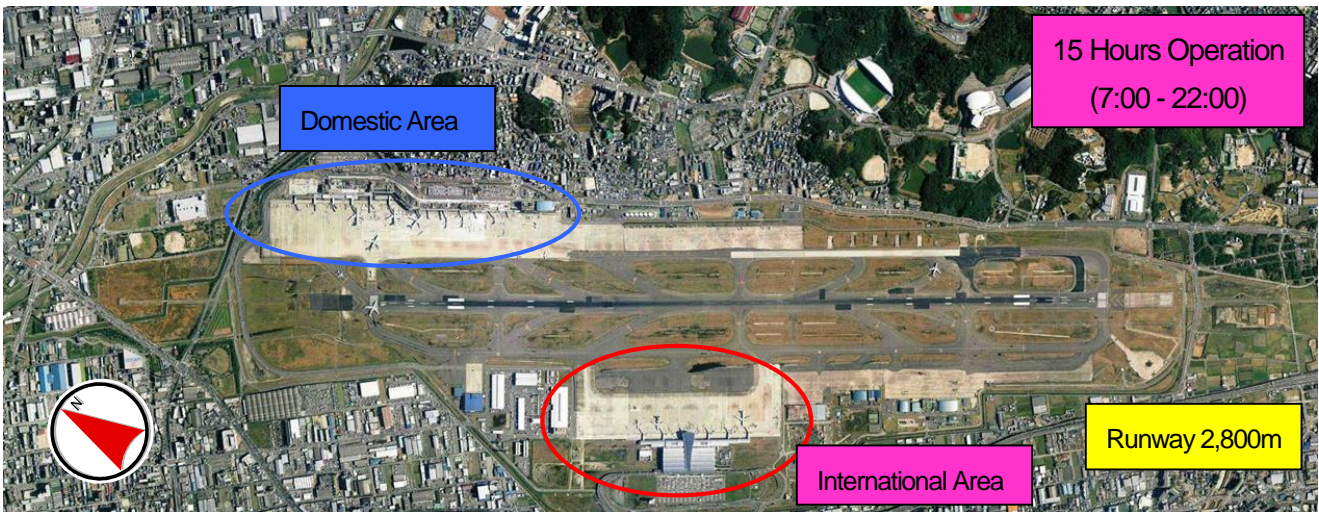
Fukuoka International Airport (FUK)

Fukuoka International Airport (福岡空港) (IATA: FUK, ICAO: RJFF) is located in Kyushu Island (the southernmost of the four main islands of Japan) and registered as level 2 airport by IATA. The airport accommodating the international and domestic flights is very conveniently located 3.0 km east of Hakata Station in Fukuoka.

The airport is located in Hakata-ku, south-east of the city center. It is connected to the rest of the city by Fukuoka City Subway and road, and a subway from the airport to the



business district takes less than 10 minutes. Since the airport is so close to the downtown Fukuoka and naturally surrounded by residential areas, the operational hour is limited to 15 hours in order to abate the environmental problems. The airport closes at 22:00 and opens at 7:00 because of the night curfew.



There is one runway (16/34) of 2,800m, and the airport is surrounded by residential areas leaving little space to expand. As it is now approaching to the full capacity, the feasibility study on airport expansion was conducted several years ago. As a result, it was found to be feasible to construct the second runway (2,500m) on the west side of the current one (close parallel runways).

In the past, 34 approach procedure (circling approach) flying over the residential areas from south was often practiced causing noise problems for local communities. However, after the installation of 34 ILS, 16 approach procedure flying over the sea from north became available. Now, the preferential runway use of 16 is practiced for noise abatement procedure. The ILS CAT- I for both 16/34 approach is now available.

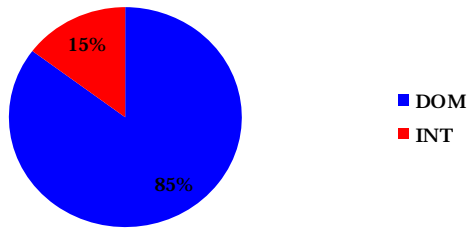
Air Traffic Record

Fukuoka International Airport is the fourth busiest passenger airport in Japan. In 2010, it was used by about 16.3 million people and there were 137,350 takeoffs and landings.

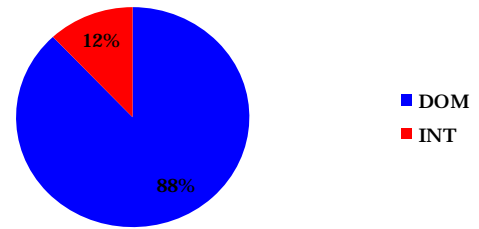
		2008	2009	2010
Aircraft Movements	DOM	118,502	119,696	120,876
	INT	16,886	15,664	16,474
	TTL	135,388	135,360	137,350
Annual Passengers	DOM	15,149,418	13,910,342	13,937,778
	INT	2,141,801	1,991,262	2,406,774
	TTL	17,291,219	15,901,604	16,344,552
Annual Cargo	DOM	207,367	189,566	192,063
	INT	50,073	42,756	52,701
	TTL	257,440	232,322	244,764

The aircraft movement of 137,350 is the third busiest following Haneda and Narita Airports in Japan. The past record of aircraft movements, passengers and cargo shows fairly stable trend. The percentage share of domestic and international traffic is 85% to 15% in passenger and 88% to 12% in aircraft movement in 2010. The share of international flights is currently rather low but it is expected to grow in the near future because of open sky policy to be introduced by JCAB.

International Share of Annual Passengers in 2010



International Share of Aircraft Movements in 2010



Flight Routes

Domestic Routes

Fukuoka Airport is designated as major trunk airport following Tokyo metropolitan airports, and it has 23 domestic destinations with about 14 million passengers. Especially, the trunk line for Fukuoka – Haneda is second busiest route following New Chitose – Haneda. There are four flights per hour by four airlines at peak hour. Another trunk line for Fukuoka – Osaka and Fukuoka – Nagoya also maintains many flights despite the fact that the competition with Shinkansen (bullet train) railway and highway bus is getting harder and harder.

International Routes

Fukuoka Airport has 20 international destinations with about 2.5 million passengers. Since Fukuoka is very close to Korea, Taiwan and China, most international destinations are those countries. There is one international flight for Guam and one international flight for Honolulu as long haul flight.

Terminal Buildings

There are 4 terminal buildings at the airport; terminal 1, 2 and 3 are for domestic and one international terminal. Domestic terminal 1, 2 and 3 are built lined up in a straight line. While it is common that each terminal building is exclusively used by specific airlines in case of multiple terminal buildings at the airport, terminal 1 is for small to medium class aircraft for local or island airports, terminal 2 and 3 are for medium to large class aircraft for trunk line airports. So, domestic passengers have to move to the specific terminal building depending on their destinations.

Domestic Terminal 1

Domestic terminal 1 is the oldest building in Fukuoka Airport which was inaugurated in 1969. It has three stories



and one underground with the total area of 19,000m². The terminal is being used for small to medium aircraft mainly for local airports or island airports. There are 4 boarding bridges and airline lounge.

Domestic Terminal 2



Domestic terminal 2 is the second old building which was opened in 1974. It has five stories and one underground with the total area of 60,000m². This terminal is mainly used for trunk line routes with 5 boarding bridges. There is a subway station under this building connecting the down town.

Domestic Terminal 3

Domestic terminal 3 is third old building which was opened in 1981. This terminal used to be utilized as international terminal before the new international terminal building was constructed on the opposite side of the runway. It has third stories with the total area of 30,000m². There are 4 boarding bridges and now used for trunk line routes.



International Terminal



The international terminal is located west side of the runway, or opposite side of domestic terminals. The international terminal was inaugurated in 1999. It has four stories with the total area of 69,000 m² and 6 boarding bridges. There is a free shuttle bus between domestic terminal and international terminal in order to provide better service for connecting passengers.

Introduction of our office

ATS Flight Information Officers are working 24 hours to maintain and support the safety and regularity of aircraft operations at the airport. Following aeronautical safety services are provided by this office such as the runway and taxiway check, parking management at the apron, issuance of ramp pass, prevention of bird strike, ATIS broadcasting, ramp inspection and permission of special operations.



In addition, the radio communication services are provided as Flight Service Center (FSC) which is placed at 8 major airports in Japan. Call sign is "Fukuoka Information". There are four transmission sites in northern part of Kyushu whose frequency can be referred to AIP. Various aeronautical information is being provided by FSC that includes ATIS information at the destination airport, weather radar information and flight plan changes. Please call this station when you fly to Fukuoka Airport.

Location of our Office

Our office is located on the east side of airport next to domestic terminals and near the center point of runway. It is three minute walk from the domestic terminal buildings. As the office building has ATC tower, you can't miss it. Please drop in when you visit Fukuoka Airport.



Fukuoka Tourist Spots

The population of the city is approximately 1.4 million people, making it the 8th largest city in Japan. Being the closest major city in Japan to the Korean Peninsula and China, Fukuoka has from ancient times been a gateway for economic and cultural exchanges with its Asian neighbors.



On the basis of these historical and geographical links, the city is working hard on many levels to strengthen its relationships with the rest of Asia, towards the goal of becoming a "focal point for the exchange of Asia".



Fukuoka Tower

Hub of a Powerful Economy;

Fukuoka is the economic, administrative and cultural center of the island of Kyushu. Kyushu as a whole has a population of 13 million people and a land area of 42,175m².



Gold Seal

Center of International Exchange since Antiquity;

The Gold Seal, a National Treasure, was originally presented to the King of Na (present day Fukuoka) by the Emperor of the Han Dynasty in AD 57. The Gold Seal is the most important artifact symbolizing the long history of exchange between Fukuoka and the Asian mainland.



Nakasu Town



Dazaifu Tenman-gu

Dazaifu Tenman-gū, National Treasure;

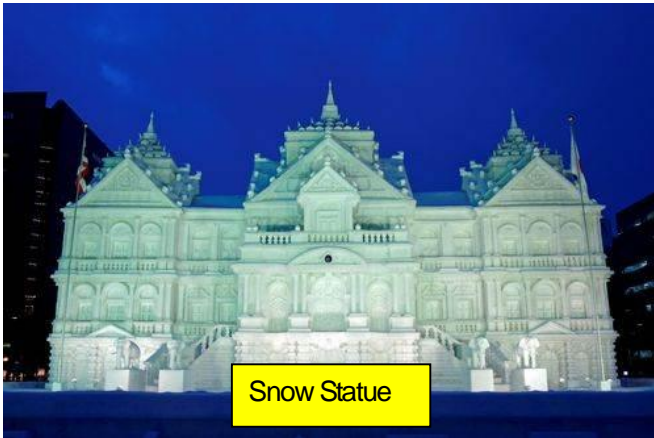
Dazaifu Tenman-gū is a Shinto shrine in Dazaifu, Fukuoka Prefecture which was built over the grave of Sugawara no Michizane (845 - 903). The Momoyama-style shrine visitors see today dates from 1591 and is an important cultural property. The shrine is also known for its 6,000 ume (Asian plum) trees belonging to 167 varieties.

From the Chief Editor

I really appreciate the contribution from Fukuoka International Airport (JCAB Airport Office). The article was very interesting and informative. I learnt Fukuoka city is growing as a hub for Asia with the increase of international passengers. I also learnt there is an airport expansion plan in order to accommodate the increasing air traffic demands.

I understand the winter weather in Europe as well as north America is extremely severe this year. What happened to global warming? Japan is not an exception either. It snows a lot in northern area especially facing the sea of Japan. Speaking of snow, Sapporo City in Hokkaido is famous for holding a snow festival in every February. The 63rd Sapporo Snow Festival was held from February 6 to 12 this year. Odori Park in Sapporo was

decorated with the hundreds of beautiful snow statues and ice sculptures shown below. Isn't that fantastic when illuminated at night?



Snow Statue



Ice Sculpture



Snow Statue of Aizu Castle



Snow Statue of Palace

As mentioned at the beginning, this year is dragon which is the mightiest in 12 animals meaning this year will be prosperous, lucky and happy for everybody. I am hoping the world economy will bloom and the air passengers will catch up this year. I also wish you a happy and healthy year of 2012. (H.T.)

